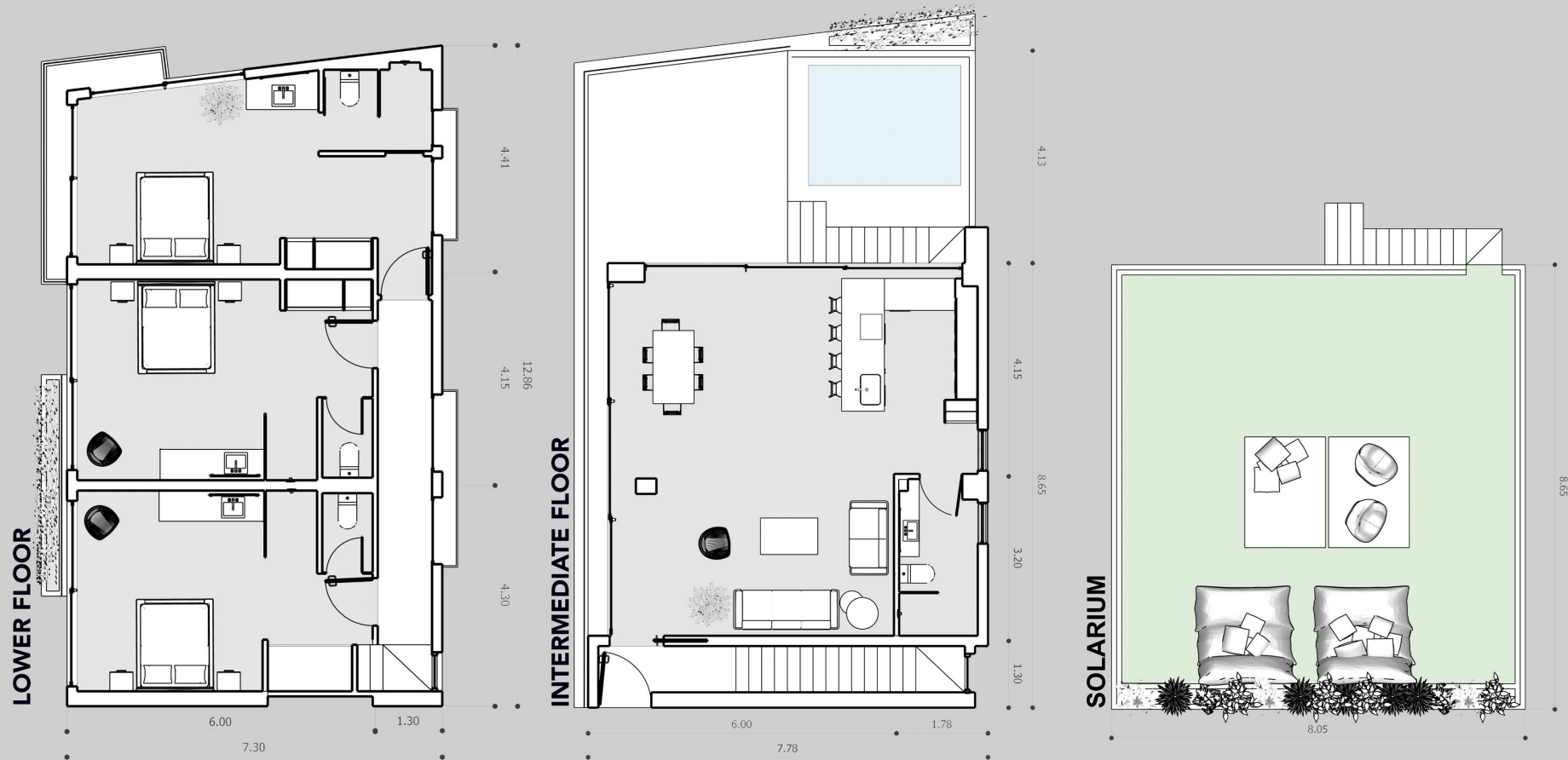
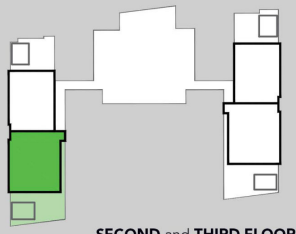




# PENTHOUSE 01



- |  |   |   |   |
|--|---|---|---|
| Furniture package (optional)                       | < | > | Hotel services (lobby, 24h security, controlled access)                         |
| Private terrace with Jacuzzi                       | < | > | Gym and Yoga loft   |
| 3 large design Suite bedrooms and 4 full bathrooms | < | > | Rooftop with 12m long swimming pool, submerged sunbeds, bar, sofas and chillout |
| 57 m <sup>2</sup> Solarium (optional)              | < |   |   |



Suite A	30 m <sup>2</sup>	<b>156 m<sup>2</sup> Interior</b>
Suite B	25 m <sup>2</sup>	
Suite C	25 m <sup>2</sup>	<b>40 m<sup>2</sup> Exterior</b>
Living room	44 m <sup>2</sup>	
Kitchen	10 m <sup>2</sup>	<b>196 m<sup>2</sup> TOTAL</b>
Bathroom	6 m <sup>2</sup>	
Corridor/stairs	16 m <sup>2</sup>	

